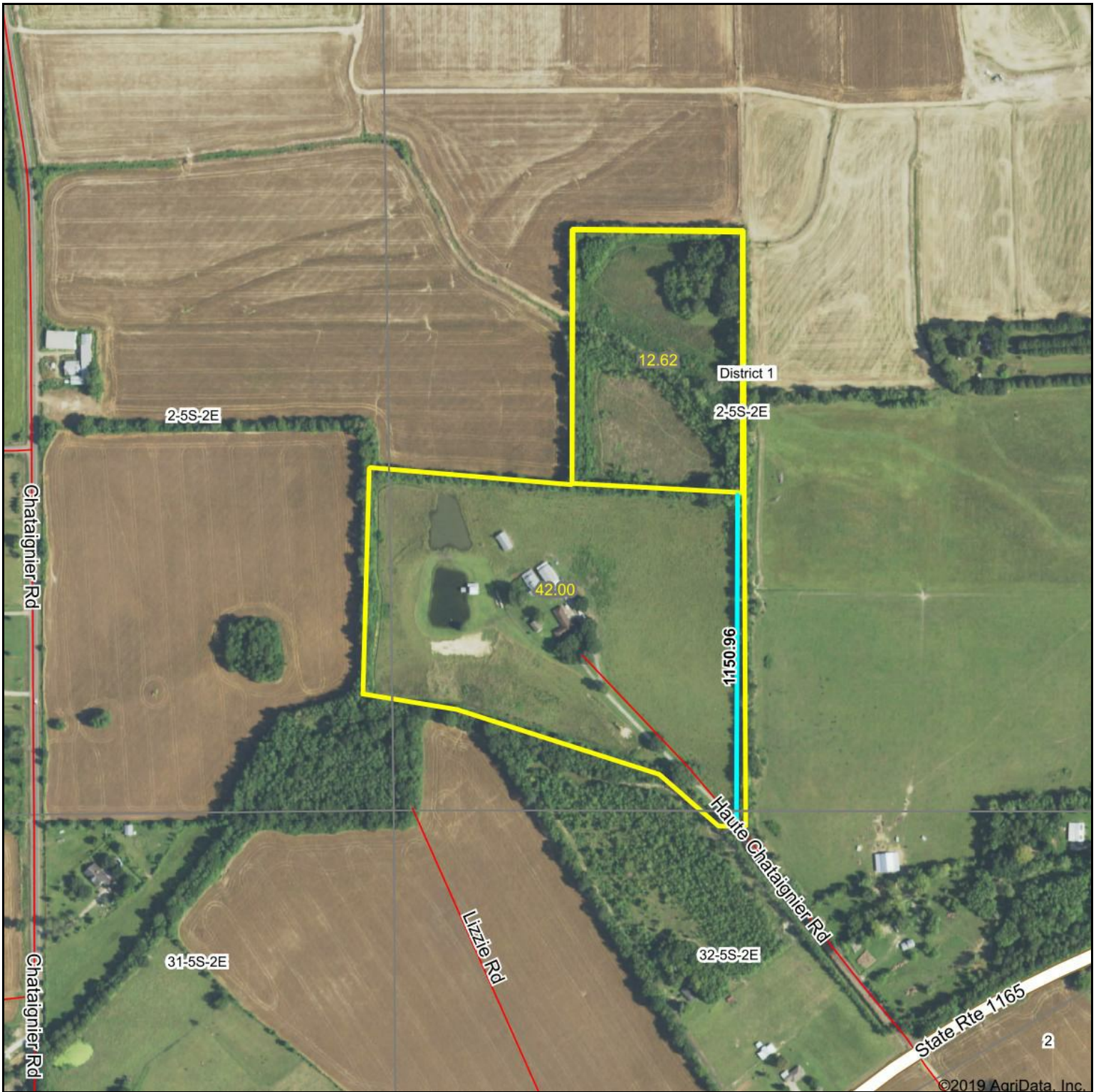


# Aerial Map

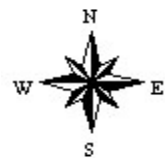


©2019 AgriData, Inc.

map center: 30° 35' 6.91, -92° 17' 42.07



**2-5S-2E**  
**Evangeline County**  
**Louisiana**



1/14/2019



**Bonnette Auctions**  
**Louisiana Outdoor Properties**  
**Auction & Real Estate Group**

Maps Provided By:

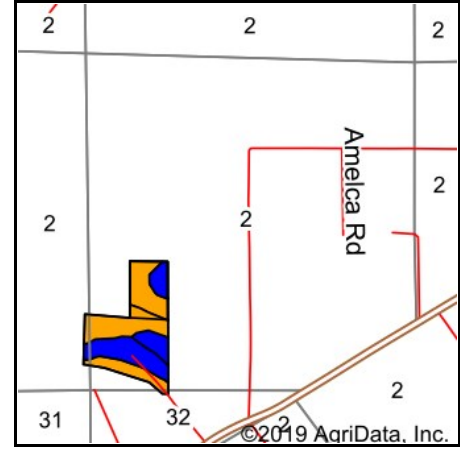


© AgriData, Inc. 2019 www.AgriDataInc.com

# Soils Map



Soils data provided by USDA and NRCS.



State: **Louisiana**  
 County: **Evangeline**  
 Location: **2-5S-2E**  
 Township: **District 1**  
 Acres: **54.62**  
 Date: **1/14/2019**



Maps Provided By:



© AgriData, Inc. 2019

www.AgriDataInc.com



Area Symbol: LA039, Soil Area Version: 10

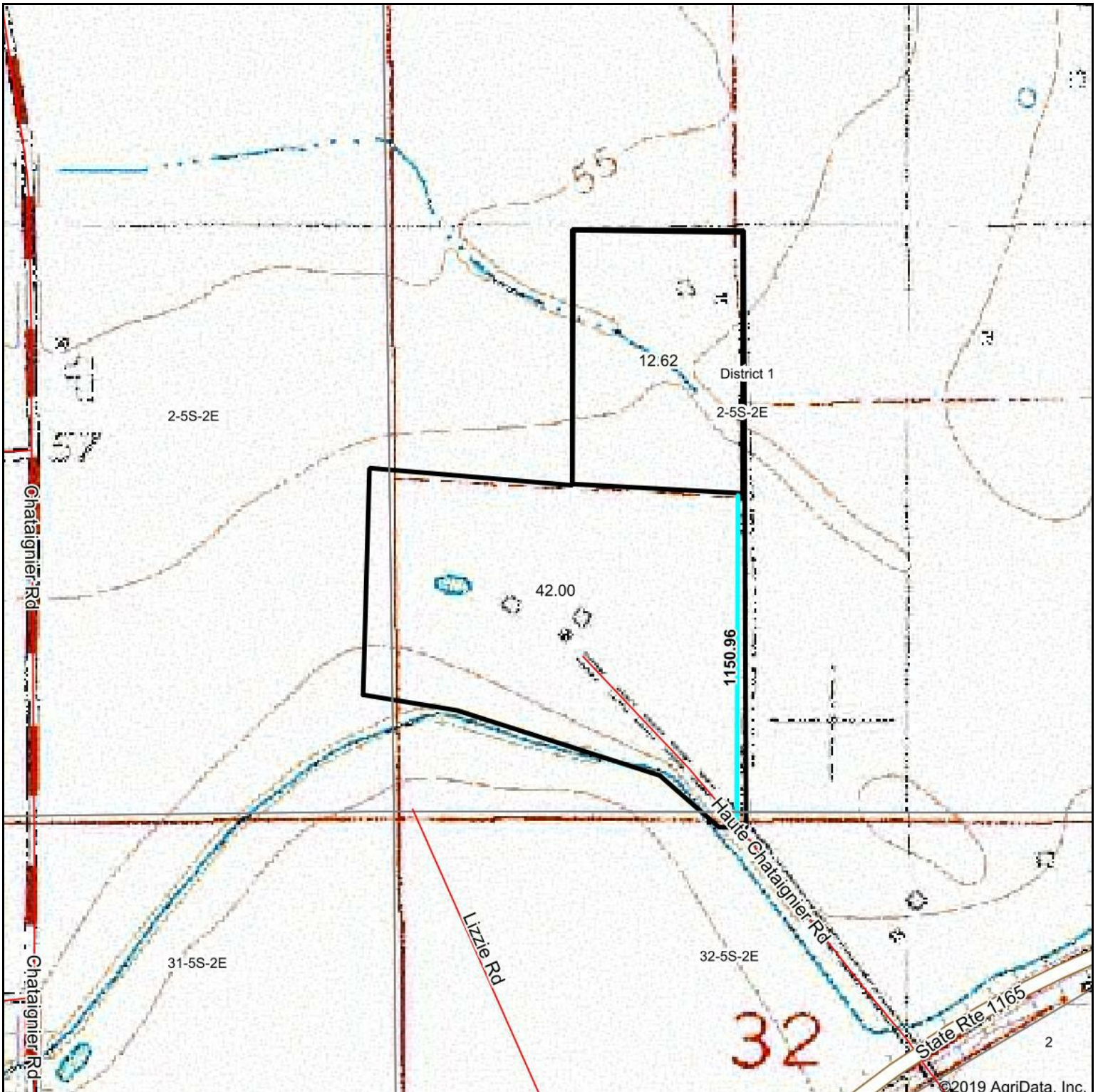
Code	Soil Description	Acres	Percent of field	Non-Irr Class Legend	Non-Irr Class *c	Bahiagrass	Common bermudagrass	Improved bermudagrass	Soybeans	Sugarcane	Sweet potatoes
Mt	Mowata silt loam, 0 to 1 percent slopes, rarely flooded	26.77	49.0%		Illw						
Cv	Crowley-Vidrine complex, 0 to 1 percent slopes	10.81	19.8%		Illw						
PaB2	Patoutville silt loam, 1 to 3 percent slopes, eroded	10.33	18.9%		Ile	6.5	5.5	11.5	30	27	240
Pc	Patoutville-Crowley complex, 0 to 1 percent slopes	6.71	12.3%		Ilw						
<b>Weighted Average</b>						<b>1.2</b>	<b>1</b>	<b>2.2</b>	<b>5.7</b>	<b>5.1</b>	<b>45.4</b>

\*c: Using Capabilities Class Dominant Condition Aggregation Method

Soils data provided by USDA and NRCS.



# Topography Map

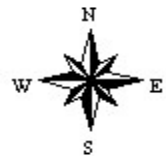


©2019 AgriData, Inc.

map center: 30° 35' 6.91, -92° 17' 42.07



**2-5S-2E**  
**Evangeline County**  
**Louisiana**



1/14/2019



Bonnette Auctions  
Louisiana Outdoor Properties  
Auction & Real Estate Group

Maps Provided By:



© AgriData, Inc. 2019 www.AgriDataInc.com